

Elim Park Announces *Riverbend* Charter Memberships - Are now available!

Elim Park's recently unveiled plans for our seventh neighborhood, *Riverbend*, boasts forty brand new apartment homes in a peaceful riverside setting. If you are planning for tomorrow, *Riverbend* might be the match for you!

Charter Member Benefits, available for a limited time, include a \$27,000 savings off the apartment entrance fee, four years of underground parking, \$36,000 in health-care benefits, and \$4,000 towards apartment upgrades.

The new residential neighborhood will be adjacent and connected to our existing campus. The floor plans offer high ceilings, open plans and eat-in kitchens, as well as patios, balconies and full size washers and dryers. Kitchens clad in granite countertops and handsome cabinetry will offer almost all the culinary equipment you need for a gourmet meal if the spirit moves you.

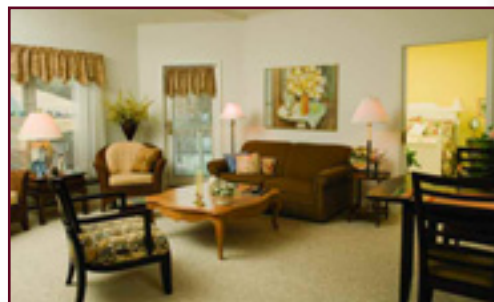
If you have ever built your own home, you know of the stress involved with the paperwork, deadlines, contractors, and all the complicated details of the construction process. Elim Park wants future residents to avoid those headaches and enjoy the fun and exciting

aspects of creating a new home! *Riverbend* Charter Members reserve an apartment now and lock in all the Charter Membership Benefits. Your apartment home will be ready when you are!

Members can be involved in planning the details of their new homes - floor plans, color schemes, appliances, countertops, and more - throughout the process. The Marketing Department will send you progress updates and Charter Members will be invited to discuss options at each stage of development. How much more personalized can a new home get?

With the onset of the Baby Boomer generation entering retirement age, and the limited number of retirement communities offering a constellation of services such as Elim Park Place, the time is right to take advantage of this exciting opportunity!

Charter Member Benefits are limited; it's your time to express interest! 🍀



God's Best Ahead!

It seems like a recurring theme at Elim Park lately, but I truly believe that the best is yet to come!

After overcoming the hurdles of the past year, we are looking forward to better and brighter days ahead. With the plans for *Riverbend* moving forward, I believe we're now embarking on a journey into the best year yet at Elim Park.

Our efforts have been fruitful because we have been faithful to our mission, and God has led us out of the wilderness with the promise of new life. Just look out your window and see what great works He has begun already.

We look forward to the new developments.

Ron Dischinger
President/CEO



The Albert Ash version of HealthAbility™ is to take it outdoors!

Al and Barbara Ash became residents of Elim Park's *Spring Meadow* neighborhood in October 2009, and since then, Mr. Ash can be found outside walking five to eight miles every morning – rain, snow, sleet, or shine. He's more reliable than the mailman!

An avid hiker and outdoorsman since childhood, Al does more than exercise his body on his

morning walks and hikes through the woods. He nourishes his spirit. He admires the beauty and the simplicity of everything that crosses his path. "I talk to God. I like to thank Him for all the beauty," says Ash, describing the area landscapes. He even keeps a log of the different flower varieties he

comes across in his travels. There were several factors that brought Mr. and Mrs. Ash to Elim Park Place, namely the proximity of walking and hiking trails and the breathtaking natural beauty that borders the Elim Park campus. Al says his goal is to walk to New Haven.



As the great outdoors continues its pull on Elim Park resident Al Ash, he hopes for an early spring.

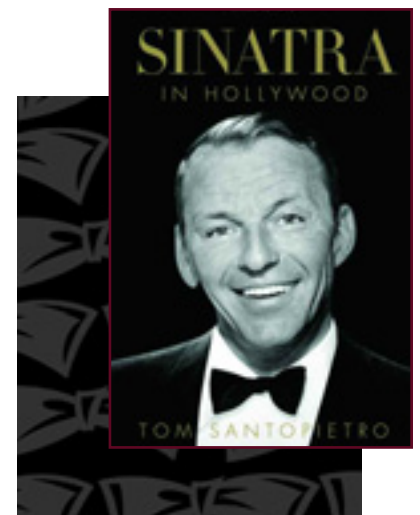
Sinatra Fans Take Note! "The Best Is Yet To Come" April 10, 2010

Elim Park Place and FIP Construction are proud to announce "*The Best Is Yet To Come*" performance on April 10, 2010, with rising star and Grammy Pre-nominee Tony DeSare, and Waterbury author Tom Santopietro, in a singing and storytelling tribute to Frank Sinatra.

"This event might be the most highly anticipated concert of the year at Elim Park" commented one resident. With all the excitement surrounding the recently unveiled plans for the *Riverbend* apartment neighborhood, the

theme of this upcoming performance seems to be a perfect fit. "We really do believe that the best is yet to come here at Elim Park. The quality of entertainment in our Premiere Entertainment Series is a prime example," said Margaretann Foster, Director of Marketing.

When Tom Santopietro launched his highly acclaimed third book, *Sinatra in Hollywood*, he enlisted the playful, sensuous voice of a rising young male performer, Tony DeSare, to collaborate. "*The Best Is Yet To Come*" debuted to a sold-out Seven Angels



Theatre in Waterbury in December 2008. The singing and storytelling act took off in popularity and led them around the

continued top page 3

Continued from page 2
country. Elim Park's Recreation Coordinator, Debra Franco, was instrumental in making the connections that brought this thrilling concert event to Nelson Hall.

As Santopietro narrates excerpts from his book, detailing Sinatra's iconic career with amusing anecdotes and revelations, DeSare reminisces and romances with the audience, adding his own unique flair to Sinatra classics.

Tickets are a steal at \$10 per person, \$15 per couple. Showtime is 7:30pm on Saturday, April 10, 2010 in Nelson Hall at Elim Park Place. For ticket information call: 203.699.5495. 🍀

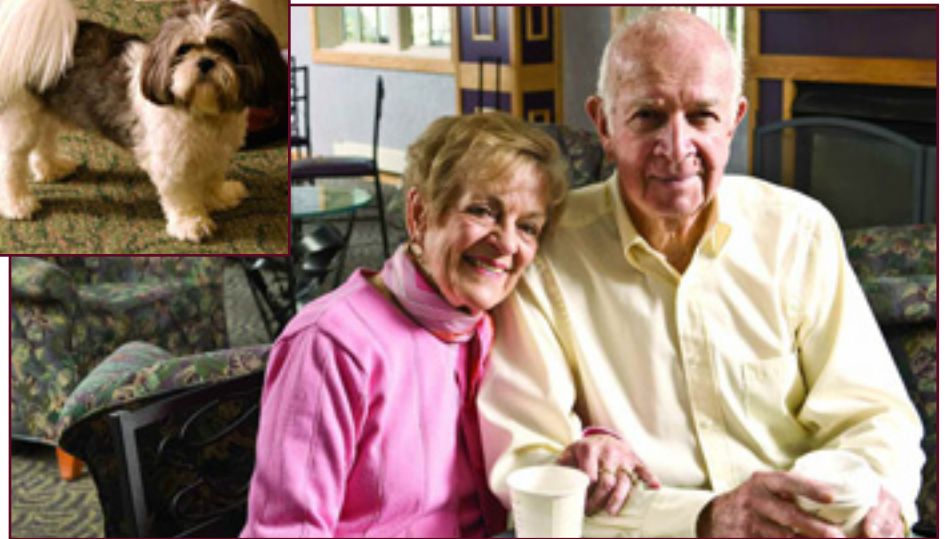
Feeling of Community Attracts Milton and Jean Grele

Milton and Jean Grele weren't looking for a new place to live, however, maintaining their 3,500 square-foot home in Naugatuck was getting to be a burden. Their daughter, Laurie Cain of Simsbury, was worried about her mom climbing the stairs as well their ability to maintain healthy eating options since they had stopped cooking for themselves. But being respectful of her parent's desires for independence, she was patient.

Within the first hour of meeting with Marketing Director Margaretann Foster, the Greles knew where they belonged. While his daughter was considering various retirement communities in the area, Milton admits, "We didn't look any further." He was comfortable from the moment they arrived. Four months later, they moved into their first residence, later transitioning into a larger apartment.

Laurie is relieved by her parent's decision, "I didn't feel they were safe in their old house." Milton and Jean say their daughter was instrumental in their move. For

Laurie, it was comforting to know that her parents' canine companion, Harri, could move with them. Elim Park welcomes pets – a very important detail in their retirement plans. Residents of the Healthcare center enjoy Harri's regular visits since he is part of the pet therapy program.



Jean and Milton Grele relax in Elim Park's Jazzmans Café. Inset: "Harri"

The Greles were always very active in their community prior to their move, and Elim Park has enriched their active lifestyle. Laurie admits that her mom had always been "a joiner" and at Elim Park Place, Jean participates in art classes, bridge, and volun-

teering. Milton has joined the Barbershop Quartet and Resident Council. Both are very enthusiastic about the programs in the Fitness and Wellness Center, and Laurie believes the aquatic therapy has helped her mom enhance her mobility. 🍀



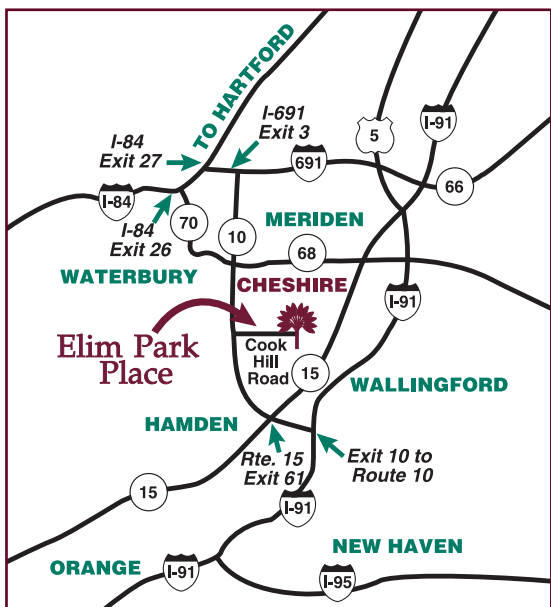
Elim Park Baptist Home, Inc. DBA

Elim Park Place

140 Cook Hill Road
Cheshire, CT 06410

203-272-7550 • www.elimark.org

Non-Profit Org.
U.S. POSTAGE
PAID
Permit #1411
New Haven, CT



Calendar of Events

All programs are open to the public and subject to change. To join us, please call 800-994-1776 or 203-272-7550 Ext. 183 for reservations.

Thursday, March 18 - 7:30 pm
Dame Gillian Weir Concert organist, \$10 per person/\$15 per couple, *Premiere Entertainment Series Event*. **Nelson Hall**.

Saturday, April 10 - 7:30pm
“The Best Is Yet To Come” Songs and stories of Frank Sinatra, \$10 per person/\$15 per couple, *Premiere Entertainment Series Event*. **Nelson Hall**.

Monday, April 19 - 7:30pm
Cheshire Symphony, Tickets \$5 senior/child or \$10 general admission, **Nelson Hall**.

Wednesday, April 21 - 11am-3pm
Art & Hobby Exhibit Elim Park resident’s collections & hobbies.

Monday, April 26 - 7pm
Brass Pack Concert, **Nelson Hall**

Tuesday, May 4 - 1:30pm
Foot Care Seminar with Dr. Pierbine, **Nelson Hall**.

Sunday, May 9 - 3:00pm **The Connecticut Ballet’s** Ballet Fest 2010, \$10 per person/\$15 per

couple, *Premiere Entertainment Series Event*. **Nelson Hall**.

Tuesday, May 18 - 7pm
New England Girls Choir Concert, **Nelson Hall**.

Wednesday, May 26 - 2pm
Wingmasters - Birds of Prey Presentation. **Nelson Hall**.

Tuesday, June 8 - 7pm **Silk-n-Sounds** Concert, **Nelson Hall**.

Saturday, June 19 - 7:30pm
The Hal McIntyre Orchestra 1940’s big band jazz tunes, \$10 per person/\$15 per couple, *Premiere Entertainment Series Event*. **Nelson Hall**.

Monday, June 21 - 7:30pm
Cheshire Symphony, Tickets \$5 senior/child or \$10 general admission, **Nelson Hall**.

Open House Events
Plan your future at Elim Park. Please RSVP.

Wednesday, March 24 - 10am

Thursday, April 29 - 10am

Tuesday, May 25 - 10am

Thursday, June 24 - 10am

Now or Later

Call us to learn more about the one bedroom and two bedroom apartment homes we currently have available. We will be glad to share with you the terrific incentives and opportunities that are waiting for you here at Elim Park Place.

If you are not ready right now, then we will help you plan ahead for your future.

To quote one of our very happy residents, *“Don’t wait! Plan for your future, and make time to enjoy it!”* Lifetime security is the best asset you can own. Please call me, Margaretann Foster, at 203-272-7550, extension 156, to design a plan that’s perfect for you!

You can also visit us online at www.elimark.org.