

Upcoming Open House

Thu, Oct 27

Program begins at 10:00am

Open Houses offer a small and personal setting with all safety protocols in place.

Seating is limited, so call today at 203.633.7629 for information and reservations.

Every Day, It Just Gets Better

As new resident Irene Schaefer comments in her story in this issue, every day at Elim Park just gets better. That's because our vision for our community is to always

find new ways to improve our services and amenities, bring new ideas to campus, listen to our residents and find ways to help make their dreams happen. It's what makes life so vibrant

here at Elim Park — and why so many people feel we are the most unique community in the region.

So, come and visit and see what we're up to today. There are also lots of exciting, new expansion plans to share when you visit. Even if you're "not ready yet" to make a move, come to one of our monthly Open Houses and tell us what you have in mind.

Each Open House features an information session presented by an expert in Life Plan Communities. You'll have the opportunity to ask questions, meet residents, and tour the beautiful campus and apartment homes. Refreshments will be served and we'll be happy to provide personalized information from a Lifestyle Specialist.

There are so many choices available. We'd love the opportunity to help you gather the information you need to make your plans.

To reserve your seat at one of our upcoming Open Houses, call 203.633.7629. Or, call for a personal tour.



FANmail

Friends And Neighbors of Elim Park Place



A World Traveler Discovers the Ideal Destination *Meet Irene Schaefer*

It was just before Christmas in 2020 when **Irene Schaefer** saw the sparkling Elim Park Christmas tree shining in the Bistro. "I knew in that moment that I was home—and I was absolutely right!"

Irene, a longtime resident of Chatham, NJ, who after her husband passed in 2020 wanted to be closer to her children and grandkids who live in Connecticut. Elim Park was the first community she looked at. "I could sense immediately that this was a place filled with warmth, friendliness and faith. Every day here proves my first impression was true."

A stewardess for more than 30 years with TWA, Irene is a world traveler who loves adventure and meeting new people. "Residents say Elim Park is like a cruise ship on land and they're not kidding! From Day One I signed up for everything—well, not everything because there's simply too much to do every day. But whatever your interests, hobbies or background, you'll find a world of activities and events to broaden your horizons. I've gone on trips to wonderful, local theaters, such as the Legacy Theater in Branford, where we've enjoyed stellar productions. Being new to CT, I was thrilled with outings to Mystic Aquarium and Katherine Hepburn's Museum in Old Saybrook. Our trip to the CT Convention Center for the renowned Beyond Van Gogh exhibit was breathtaking—thanks to our amazing activities director, Sharon Snow, who wisely bought a big block of tickets before they quickly sold out."

"As a former stewardess, I've traveled extensively, and when I heard about an upcoming trip to Israel while attending a lecture series at Elim Park University, I knew I had to go." Elim Park University (EPU) is a unique offering on campus where residents are the instructors as well as the students. As part of EPU, residents Clay and Joy Norman organized a guided, group trip to Israel that included five nights in Galilee and five

continued on page 2

"It just keeps getting better every day!"



Irene in the TWA uniform she last wore as a stewardess in 1990. Top photo: Irene on Graduation Day from TWA Hostess School in 1960.



Breaking Ground and Looking Ahead to Spring

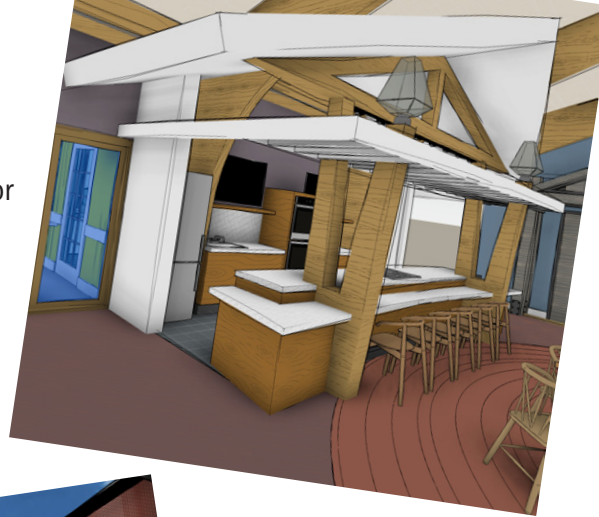
Every season is wonderful at Elim Park, but this fall promises to be an especially notable one because we have broken ground for our new Arts & Leisure Center! Administrator for Independent Living, Rob Cota provides the latest update: “We’re working closely with our architect and builder and anticipate opening the new Center in early spring 2023. One of the many great things about the design is the easy flow that seamlessly connects all spaces, inside and out. Uniting the Center is a tranquil outdoor courtyard where residents, family and friends can relax and enjoy an outdoor space filled with natural beauty, comfortable benches and a welcoming gazebo.”

Another hallmark of this growth project is the new prayer Chapel. “On August 26 residents, friends and supporters of our community gathered to break ground for our new Chapel,” Rob continues. “Led by Pastor Tim Olson, we celebrated the day with readings, prayers and blessings for this place of worship to be a source of peace and hope to all who enter its doors.”

Something for Everyone

Elim Park’s unique Arts & Leisure Center has been designed as a “mini-resort” within our larger community that promises something for everyone. The new Summer Shack will

offer casual indoor/outdoor dining during warm months and features a comfortable patio that opens onto a great



outdoor space for the grandkids to run around. When you’re ready for some fun, visit the arcade room that will offer tabletop bowling, skee ball, a classic pinball machine, pool table and more.

Residents can also look forward to staying active with a state-of-the-art sports simulator and hone their golf, baseball or basketball skills. Elim Park University

students will enjoy new space to expand their minds, hearts and souls. Arts and crafts enthusiasts will have plenty of room to explore painting, pottery, craft projects and much more. A demonstration kitchen will give food lovers a great space to attend cooking classes with our Executive Chef—or bring their favorite family recipes and share them with others.

Right now, our Mind, Body, Spirit Capital Campaign is underway to help us fund this life-enhancing new Center. To help us reach our goal of raising \$1.5 million dollars, we are reaching out to friends and family of Elim Park. We welcome charitable gifts of all types, including annual gifts, major gifts, long-term pledges and planned gifts. Your support is a unique way to create a legacy at Elim Park and become a member of the Fellowship of Living Stones, our planned giving recognition society.



Residents, Board members and staff breaking ground for the new Prayer Chapel.

Irene—continued from page 1

nights in Jerusalem. “It was the trip of a lifetime,” says Irene.

“And while the out-trips are terrific, so is life here on campus. I love the classes at EPU, performances at Nelson Hall and

pool aerobics in the Fitness & Wellness Center. Every day I walk to Main Street for a fresh Cappuccino. Well, sometimes it takes all morning to get back to my apartment because I run into so many friends and neighbors along the way. And my family just loves that I’ve moved here.

In fact, my son-in-law says he wants to move in!”

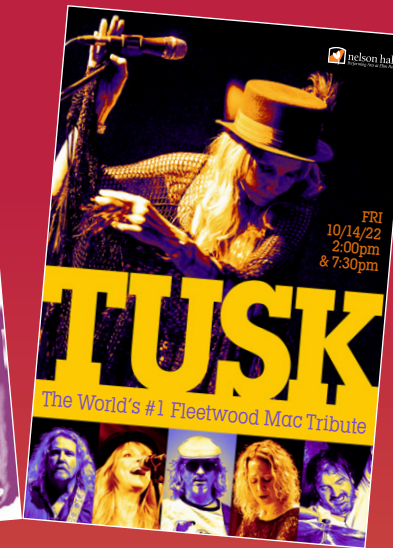
“Frankly, it just keeps getting better every day. I’m really looking forward to seeing that beautiful Christmas tree again this holiday season—especially now that I call Elim Park my home.”

Our Best Season Ever!

Get ready—and get your seats and season tickets—for the best program of performances ever presented at Nelson Hall.

October 6

A blend of film and live music reveals the life story of the famous duo. Watch a documentary that plays while these incredible live musicians perform on our stage. It’s like nothing you’ve experienced before!

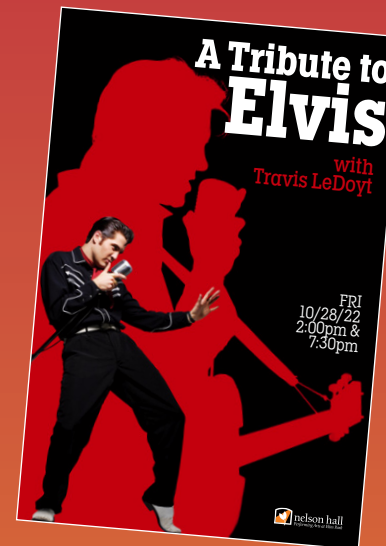


October 14

Don’t miss rocking along to the world’s #1 Fleetwood Mac Tribute band. Tusk covers all of Fleetwood Mac’s favorite hits and pays homage to one of the world’s most beloved and top-selling bands of all time. (You’ll swear Stevie Nicks is on stage!)

October 28

Musician Travis LeDoyt has audiences gasping with his resemblance to “The King” when he walks on stage. And when he starts to sing and dance, you’ll swear Elvis really is in the building! Elvis’ former drummer has said, “It’s as close as you’ll get to experiencing a concert by Elvis in the early years.”



November 3

Celebrate our veterans in high style with American military favorites and the music of WWII with the famed Brass Quintet’s stirring versions of armed forces medleys, jazz, marches and more.



November 11

This unique Opera/Rock Mash-up sensation performs an unforgettable blend of iconic Opera classics alongside Rock ‘n Roll greats like Queen, Elton John, Bon Jovi and more. The Tenors never forget their Jersey roots, though, and also feature music of Frankie Valli and the Four Seasons, Frank Sinatra and Bruce Springsteen.



December 8

Close your eyes while listening to acclaimed concert and recording artist, Michelle Berting Brett, and you’ll swear you hear the unique, pure voice of Karen Carpenter. This magical tribute concert will have you singing along to the Carpenter’s greatest hits (“Close to You,” “We’ve Only Just Begun”) and holiday favorites like “Winter Wonderland.”

Tickets for all performances are on sale now. And discounted season tickets are back! To reserve your seats and get on our email list, go to NelsonHall.org.

Upon arrival, patrons must provide proof, on paper or a smartphone photo, that they are fully vaccinated and, if eligible, have received a Covid 19 booster. Photo ID and masks are required.

For questions, call the Box Office at 203.697.8992