

Happy
New Year!

January 2025

everything ELIMS

WONKA
THURSDAY,
JANUARY 23
12:30pm

ELIM PARK EARNS
2024 BEACON AWARD

Page 5

NOAH WEBSTER
HOUSE TOUR

January 23

ANYTHING GOES ►

Broadway Broadcast Series

January 15



everything ELIMS

January 2025

Your guide to Life Enrichment activities and trips, performing arts live in Nelson Hall, and broadcasts on our in-house channel, EPTV 125.

ALSA Clinics

Griffin Hospital Blood Draw

Tuesdays at 8:00am,
Thursdays at 8:30am
Mallard Mill Medical Suite
To schedule, call the nurse at x4322

Blood Pressure Clinic

Thursday at 11:00am–12:00pm
ALSA Nursing Office

Hearing Aid Clinic

Monday, Jan 13 • 1:00pm–4:00pm
Mallard Mill 2nd floor library
Call x4329 for appointment

Ear Wax Clinic

Thursday, Jan 9 • 1:15pm–3:45pm
Mallard Mill Medical Suite
Call at x4329 for details and to sign up.

Podiatrist

Thursday, Jan 9 from 9:00am–5:00pm
Mallard Mill Medical Suite
Call 203.745.4002 for appointments

Arts & Leisure

Julia Bleau, Arts & Leisure Coordinator
Phone extension: x4163
Email: jbleau@elimpark.org

Contact Julia:

- To reserve spaces in the Arts & Leisure Center
- To suggest new activities or form a new group

Bus To Shopping

Catch the Elim Park bus transportation to local grocery stores, banks, and more. A schedule of times and locations can be found at the Concierge Desk in the Oasis, or call the Transportation Coordinator at x4354.

Residents need to sign up by 3:00pm the day before the shopping trip.



**Neighborhood pick ups
begin at 9:00am on
Tuesdays and Fridays
and at 9:30am on
Wednesdays.**

Life Enrichment

Sharon Snow, Life Enrichment Coordinator
Phone extension: x4143
Email: ssnow@elimpark.org

Contact Sharon:

- To make reservations for trips and life enrichment programs
- To reserve common areas and lounges for a group activity
- To suggest new activities or form a new group

EPTV: In-house TV

125– Nelson Hall
events and info, including live broadcasts.

126– Bulletins and other news.



Nelson Hall

Pam Nelson,
Director, Nelson Hall
Phone extension: x4309

Email: pnelson@elimpark.org

Box office phone: x4495

Email: nelsonhall@elimpark.org

To reserve Nelson Hall for an event or meeting, email:
Nelsonhallproductions@gmail.com

Nelson Hall FAQs

“What do I need to reserve in advance?”

Residents must purchase show tickets with assigned seating.

You do not need to reserve a seat for Sunday Services, movies or any other meetings or events at this time.

“Where and when can I get tickets to shows?”

- Guests can purchase on-line at nelsonhall.org
- Residents and staff can visit the Box Office during open hours
- Call the Box Office at x4495 or 203.699.5495
- Email nelsonhall@elimpark.org

Box Office Hours:

Tue–Fri, 10:00am–2:00pm

FITNESS & WELLNESS CENTER SCHEDULE—January 2025

Monday	Tuesday	Wednesday	Thursday	Friday
Land Exercise Schedule				
9:00am–9:30am Blue Class	9:00am–9:30am Circuit	9:00am–9:30am Blue Class		9:00am–9:30am Blue Class
9:45am–10:15am Core Strength	9:45am–10:15am Mind/Body		9:45am–10:15am Mind/Body	
10:45am–11:15am Green Class		10:45am–11:15am Green Class		10:45am–11:15am Green Class
	11:15am–11:45am Balance		11:15am–11:45am Balance	
12:00pm–12:30pm Yellow Class	12:00pm–12:30pm Yellow Class	12:00pm–12:30pm Yellow Class		12:00pm–12:30pm Yellow Class
BLUE: Moderate to vigorous activity regularly, class all standing. GREEN: Active life most of the time, class mix of standing and seated. YELLOW: Mobility limitations, seated class with weights. BALANCE: Improving posture and balance for all fitness levels. CIRCUIT: Moderate to vigorous activity, class combines strength, balance and cardio exercises. CORE STRENGTH: Class designed to target and strengthen core/abdominal muscles. Participants will be on the floor for the majority of class. MIND/BODY: Seated class with stretching/relaxation.				
Aquatic Exercise and Pool Schedule • No Lifeguard on Duty—Swim at Your Own Risk				
Please swipe your barcode to sign in and out, whether attending a class or open swim				
5:00am–9:00am Open Swim	5:00am–11:00pm Open Swim	5:00am–9:00am Open Swim	5:00am–8:30am Open Swim	5:00am–9:00am Open Swim
			8:30am–9:00am Aqua Power	
9:15am–10:00am Aqua Blue		9:15am–10:00am Aqua Blue	9:15am–11:00pm Open Swim	9:15am–10:00am Aqua Blue
10:15am–11:00am Aqua Green		10:15am–11:00am Aqua Green		10:15am–11:00am Aqua Green
11:15am–Noon Aqua Yellow		11:15am–Noon Aqua Yellow		11:15am–Noon Aqua Yellow
Noon–11:00pm Open Swim		Noon–11:00pm Open Swim		Noon–11:00pm Open Swim
AQUA BLUE: For participants who perform moderate to vigorous activity regularly. AQUA GREEN: For participants who lead an active lifestyle most of the time. AQUA YELLOW: For participants who need a gentle class due to mobility limitations. AQUA POWER: For participants looking for a higher energy class for strength and cardio exercise.				

Fitness & Wellness Center Main Phone – 203.272.3547 x360 or in-house dial x4360

Spring Season 2025



**Elim Park's Inaugural
Rooted in Faith Concert**

Season Packages Available Now!

Single Tickets Go on Sale January 7

Visit the Box Office to secure your seats for another great season of entertainment!

Elim Park Voted Top 10 'Best in Wellness' Senior Living Communities in North America!



We're thrilled to announce that Elim Park has earned the prestigious 2024 ICAA NuStep Beacon Award, placing 9th among North America's Top 25 "Best in Wellness" senior living communities—and we're the first in Connecticut to ever receive this honor!

This award highlights Elim Park's commitment to a vibrant, wellness-centered lifestyle, where health, connection, and purpose are woven into everyday life for residents and staff alike.

Presented by the International Council on Active Aging (ICAA) and NuStep, LLC, this recognition celebrates communities that embrace holistic well-being—physical, emotional, social, and spiritual. As ICAA CEO Colin Milner says, "Wellness is no longer optional—it's a way of life."

Thank you to our incredible Elim Park family for making this achievement possible. Together, we're redefining senior living and shaping a brighter, healthier future!





New Year Step Challenge

January 6–17

Step into the new year and join the fun

1. Three groups to choose from:
Hikers—Walk 5,000 or more steps per day
Striders—Walk 3,000–4,000 steps per day
Marchers—Walk less than 3,000 steps per day
2. Use your own watch or phone for tracking your steps (a few pedometers are available to lend out)
3. Record your daily steps in the Fitness Center
4. Top 3 walkers in each group win a prize

Stop by the Fitness Center to register!



- Gain Strength
- Improve Balance and Flexibility
- Improve Ability to complete Daily Tasks
- Feel Better

Join us on an 8 week Exercise & Wellness program designed to increase strength, improve balance and flexibility as well as help you feel better. A small group setting allows for personal attention.

This program is great for those who are not currently exercising or for those looking to improve their ability to do daily tasks.

Participants will complete a full fitness evaluation at the beginning and at the end of the 8 weeks to measure wellness gains.

Program meets 3 times per week for 30 minutes

Mon, Wed, Fri •
11:20am–11:50am •
Jan 13–Mar 7

Limited Space—
Register Today!



- Register at the Fitness Center Monday–Friday from 7:30am to 3:00pm to complete the registration process.
- **Questions?**
Stop by the Wellness Center to see Justin or Heather or call x4370 Mon–Fri
- \$30.00 payable by check

	New Years Day 2025	Thu • January 2	Fri • January 3	Sat • January 4		Birthday/Anniv
9:00am		Devotions • EPTV	Devotions • EPTV Bus to Shop—Stop & Shop/Library		9:00am	 Birthdays January 1 Sarah Whitson
9:15am		Today at Elim • EPTV	Today at Elim • EPTV		9:15am	
10:00am				Corn Hole • WC	10:00am	
11:30am				First Saturday Rosary • SA	11:30pm	
1:00pm			Wii Golf • AK1		1:00pm	 Important Announcement! Exciting Updates Coming to Nelson Hall! We are pleased to announce that renovations at Nelson Hall will begin soon. Stay tuned for updates. During this time, programming will be adjusted to accommodate the upgrades. We apologize for any inconvenience this may cause and appreciate your understanding as we make Nelson Hall even better!
1:30pm			Knitting/Crocheting Group • AW		1:30pm	
2:00pm			First Friday RC Mass • HCC	Movie— <i>Little Miss Sunshine</i> (1:41) • NH	2:00pm	
3:00pm			Rosary • SA		3:00pm	
4:30pm		Hanukkah Prayer • SA			4:30pm	

AW—Art Works AK—Andrews Knoll CH—Club House EPTV—Channel 125 HCC—Health Care Ctr MM—Mallard Mill MV—Mountain View NH—Nelson Hall SA—Sanctuary SM—Spring Meadow WC—Wellness Ctr

	Sun • January 5	Mon • January 6	Tue • January 7	Wed • January 8	Thu • January 9	Fri • January 10	Sat • January 11		Birthday/Anniv
9:00am		Devotions • EPTV	Devotions • EPTV Bus to Shop—Big Y	Devotions • EPTV	Devotions • EPTV	Devotions • EPTV Bus to Shop—Stop & Shop		9:00am	 <p><i>Birthdays</i></p> <p><i>January 5</i> Marie Campbell</p> <p><i>January 6</i> Priscilla Sheldon Janice Marler</p> <p><i>January 8</i> David MacNeill Kathleen Kurowski</p> <p><i>January 9</i> Charlotte Strmecki Angeline Fazzio Wayne Gyenizs</p> <p><i>January 10</i> Jackie Murray</p>
9:15am		Today at Elim • EPTV	Today at Elim • EPTV	Today at Elim • EPTV	Today at Elim • EPTV	Today at Elim • EPTV		9:15am	
9:30am				Bus to Shop—Wallingford Walmart	<i>Depart for Nativity Scenes</i>			9:30am	
10:00am		St. Bridget's RC Mass • NH	Brain Fitness • AW				Corn Hole • WC	10:00am	
10:30am	Worship • EPTV & NH							10:30am	
11:00am		Creative Coloring Group • AW Men's Group w/Pastor Tim • SA	Handbell Choir • RB3 EPU: World of Watercolor • EPTV Communion Service • SA	Prayer Meeting w/Pastor Tim • SA				11:00am	
11:30am				Cinema Group Meeting • NH				11:30am	
11:35am	RC Comm—11:35am • RCH /11:45am • HCC /11:55am • BV1							11:35pm	
12:00pm			Elim Park Players Meeting • NH					12:00pm	
12:30pm	Great Courses • NH							12:30pm	
1:00pm	Mexican Dominoes • BV1	Lecture: <i>CT in WWI</i> • NH Mahjong • MV2	Wii Bowling • CH Open Bridge • SM1	Open Paint Studio • AW Curtains UP! Theatre • EPTV Open Bridge • SM1		Wii Golf • AK1		1:00pm	
1:30pm		Whist • AK3	Whist • AK3			Knitting/Crocheting Group • AW		1:30pm	
2:00pm			Peaceful Painting— <i>K. Trapp</i> • AW	Family Support Group • MV3E 10M Knowledge • EPTV				2:00pm	
3:00pm			Golf with Jenn • CH	Great Courses • NH	Res/Pres Meeting • EPTV & NH	Rosary • SA		3:00pm	
4:30pm					4:30pm–6:30pm Gazebo Musicians— <i>Don Pierson</i>			4:30pm	
6:30pm			Movie—The Bucket List (1:37) • NH	Healing Prayer • SA				6:30pm	
7:15pm		Bingo • Bistro						7:15pm	
7:30pm		Bible Study, Pastor Wayne • RB3						7:30pm	

	Sun • January 12	Mon • January 13	Tue • January 14	Wed • January 15	Thu • January16	Fri • January 17	Sat • January 18		Birthday/Anniv
9:00am		Devotions • EPTV	Devotions • EPTV Bus to Shop—Big Y	Devotions • EPTV	Devotions • EPTV	Devotions • EPTV Bus to Shop—Stop & Shop/Library		9:00am	 <p>Birthdays</p> <p>January 13 Marian McCarthy</p> <p>January 16 Lucia Powell Carol Pensiero</p> <p>January 18 Bruno Carabetta</p>
9:15am		Today at Elim • EPTV	Today at Elim • EPTV	Today at Elim • EPTV	Today at Elim • EPTV	Today at Elim • EPTV		9:15am	
9:30am				Bus to Shop—Townline Sq, Meriden				9:30am	
10:00am			Brain Fitness • AW		Trinity Episcopal Service • SA		Corn Hole • WC	10:00am	
10:30am	Worship • EPTV & NH							10:30am	
11:00am		Creative Coloring Group • AW Men's Group w/Pastor Tim • SA	Handbell Choir • RB3 EPU: <i>World of Watercolor</i> • EPTV	Prayer Meeting, w/Pastor Tim • SA				11:00am	
11:15am					Depart for Cafe Fiore			11:15am	
11:35am	RC Comm—11:35am • RCH /11:45am • HCC/11:55am • BV1							11:35am	
12:00pm			Elim Park Players Meeting • NH					12:00pm	
12:30pm	Great Courses • NH				Movie— <i>Dark Victory</i> (1:44) • NH			12:30pm	
1:00pm	Mexican Dominoes • BV1	Mahjong • MV2	Lecture: <i>CT Birdman</i> • NH Wii Bowling • CH Open Bridge • SM1	Open Paint Studio • AW Curtains UP! Theatre • EPTV Open Bridge • SM1		Wii Golf • AK1		1:00pm	 <p>The newest member of our Elim Park family!</p> <p>Barbara Glass <i>Apt. 5304</i></p>
1:30pm		Whist • AK3	Whist • AK3			Knitting/Crocheting Group • AW		1:30pm	
2:00pm			Peaceful Painting—K. Trapp • AW	10M Knowledge • EPTV			Movie— <i>The Help</i> (2:26) • NH	2:00pm	
3:00pm	Grandparents Day of Prayer • CH		Golf with Jenn • CH	Great Courses • NH	Healing Service • SA	Rosary • SA		3:00pm	
4:30pm					4:30pm—6:30pm Gazebo Musician—Paul Forcucci			4:30pm	
6:30pm				Broadway Broadcast — <i>Anything Goes!</i> • NH				6:30pm	
7:15pm		Bingo • Bistro						7:15pm	
7:30pm		Bible Study, Pastor Wayne • RB3						7:30pm	

	Sun • January 19	Mon • January 20	Tue • January 21	Wed • January 22	Thu • January 23	Fri • January 24	Sat • January 25		Birthday/Anniv
9:00am		Devotions • EPTV	Devotions • EPTV Bus to Shop—Big Y	Devotions • EPTV	Devotions • EPTV	Devotions • EPTV Bus to Shop—Stop & Shop		9:00am	 <p><i>Birthdays</i> <i>January 23</i> Sam Velleca <i>January 24</i> Gladys Camp</p>
9:15am		Today at Elim • EPTV	Today at Elim • EPTV	Today at Elim • EPTV	Today at Elim • EPTV	Today at Elim • EPTV		9:15am	
9:30am				Bus to Shop—North Haven Crossing				9:30am	
10:00am							Corn Hole • WC	10:00am	
10:30am	Worship • EPTV & NH							10:30am	<p><i>Special Presentation</i></p>  <p>Putting the Puzzle Together: The Choice of Which Gifts to Make</p> <p>Understand which charitable gifts you can make to maximize tax deductibility. <i>Thur, Jan 23 @11:00am</i> <i>The Clubhouse</i></p> <p>Presented by Jennifer McHale, Director of Development</p>
11:00am		Creative Coloring Group • AW Men's Group w/Pastor Tim • SA	Handbell Choir • RB3 EPU: <i>World of Watercolor</i> • EPTV	Prayer Meeting, w/Pastor Tim • SA	Charitable Gift Presentation • CH			11:00am	
12:00pm			Elim Park Players Meeting • NH		<i>Depart for Noah Webster House</i>			12:00pm	
12:30pm	Great Courses • NH				<i>Movie—Wonka (1:56) • NH</i>			12:30pm	
1:00pm	Mexican Dominoes • BV1	MLK Jr Celebration • NH Mahjong • MV2	Wii Bowling • CH Open Bridge • SM1	Open Paint Studio • AW Curtains UP! Theatre • EPTV Open Bridge • SM1		Wii Golf • AK1		1:00pm	
1:30pm		Whist • AK3	Whist • AK3			Knitting/Crocheting Group • AW		1:30pm	
2:00pm			Peaceful Painting—K. Trapp • AW	Family Support Group • MV3E 10M Knowledge • EPTV				2:00pm	
3:00pm	Roman Catholic Mass • NH		Golf with Jenn • CH	Great Courses • NH		Rosary • SA		3:00pm	
4:30pm					<i>4:30pm—6:30pm</i> Gazebo Musician—Bobby Trapp			4:30pm	
6:30pm						Canasta • MV		6:30pm	
7:15pm		Bingo • Bistro						7:15pm	
7:30pm		Bible Study, Pastor Wayne • RB3						7:30pm	

	Sun • January 26	Mon • January 27	Tue • January 28	Wed • January 29	Thu • January 30	Fri • January 31	
9:00am		Devotions • EPTV	Devotions • EPTV Bus to Shop—Big Y	Devotions • EPTV	Devotions • EPTV	Devotions • EPTV Bus to Shop—Banks & Pharmacies	9:00am
9:15am		Today at Elim • EPTV	Today at Elim • EPTV	Today at Elim • EPTV	Today at Elim • EPTV	Today at Elim • EPTV	9:15am
9:30am				Bus to Shop—Bosco's			9:30am
10:00am			Brain Fitness • AW				10:00am
10:30am	Worship with the Bennetts • EPTV & NH						10:30am
11:00am		Creative Coloring Group • AW Men's Group w/Pastor Tim • SA	Handbell Choir • RB3 EPU: World of Watercolor • EPTV	Prayer Meeting, w/Pastor Tim • SA			11:00am
11:35am	RC Comm—11:35am • RCH /11:45am • HCC /11:55am • BV1						11:35am
12:00pm			Elim Park Players Meeting • NH				12:00pm
12:30pm	Great Courses • NH						12:30pm
1:00pm	Mexican Dominoes • BV1	Mahjong • MV2	Lecture: <i>Animal Tricksters</i> • NH Wii Bowling • CH Open Bridge • SM1	Open Paint Studio • AW Curtains UP! Theatre • EPTV Open Bridge • SM1		Wii Golf • AK1	1:00pm
1:30pm		Whist • AK3	Whist • AK3			Knitting/Crocheting Group • AW	1:30pm
2:00pm				Family Support Group • MV3E 10M Knowledge • EPTV			2:00pm
3:00pm			Golf with Jenn • CH	Great Courses • NH	Healing Service • SA	Rosary • SA	3:00pm
6:30pm			Movie— <i>Unsung Hero</i> (1:53) • NH				6:30pm
7:15pm		Bingo • Bistro					7:15pm
7:30pm		Bible Study, Pastor Wayne • RB3					7:30pm



Birthday/Anniv

Birthdays

January 30
Sharon Ort

January 31
Linnea Stursberg
Warren French

Broadway Broadcast Series

Anything Goes!

Wed, January 15
6:30pm

As the S.S. American heads to sea, etiquette and convention head out the portholes as two unlikely pairs set a course to true love. But destiny needs a little help from singing sailors, comical disguises, and good old-fashioned blackmail. Directed by Kathleen Marshall, this production of Cole Porter's classic musical comedy features Sutton Foster, Robert Lindsay, Felicity Kendal and Gary Wilmot.



Elim Park

elevate your everyday

Honoring Our Past, Embracing the Future: "Elevate Your Everyday"



We're excited to introduce our new tagline, **Elevate Your Everyday**, a reflection of Elim Park's dedication to redefining senior living. Rooted in over a century of service and a tradition of helping others, this tagline captures the heart of our Christian mission—to create a community where residents feel uplifted, empowered, and inspired to live their best lives. It is a promise to establish Elim Park as the premier destination for exceptional senior living.

In the upcoming year, this tagline will be used across marketing channels including print, website, social media, email marketing, and more. Thank you for being part of what makes Elim Park extraordinary. Together, let's welcome this new year as we keep striving to **Elevate Your Everyday!**

Our Mission

Elim Park is a not-for-profit Life Plan Community whose mission is to provide quality care through comprehensive wellness programs and medical facilities for our residents in a Christ-centered environment.

Elim Park looks upon its mission as an extension of the Church ministry within Converge

Worldwide and gives admission priority to its members.

Residents are encouraged to grow spiritually as they live out their lives at a level of wellness and independence appropriate to their individual situations.

Our Values

Honor God in all we do.
(Colossians 3:23)

Encourage spiritual growth.
(Colossians 1:9)

Respect the dignity of life.
(1 John 3:17)

Commit to excellence.
(Philippians 4:8)

Respect the individual.
(Philippians 2:3-4)

Maintain open communication.
(2 Corinthians 8:21)

Be fiscally responsible.
(1 Timothy 5:8)

Hire a competent staff who exhibit a caring attitude and high moral standards. (Proverbs 3:5-6)



New marketing brochure in the works!



THE GREAT COURSES

Music as a Mirror of History

Discover the fascinating ways in which great works of music have interacted with historical events, in this eye-opening course taught by a celebrated composer and music historian.

1/5 @12:30pm & 1/8 @3:00pm

Janacek: Piano Sonata LX (1905)

1/12 @12:30pm & 1/15 @3:00pm

Rimsky-Korsakov: The Golden Cockerel (1907)

1/19 @12:30pm & 1/22 @3:00pm

Holst: Ode to Death (1919)

1/26 @12:30pm & 1/29 @3:00pm

Berg: Wozzeck (1922)



Recycle Tip of the Month

Make a New Year's Resolution to Improve Your Recycling Habits

- All jars, bottles, cans, and containers must be clean (free of food residue) & dry (no liquids).
- Remove handles from brown bags. (Discard handles in the trash.) Empty recycling contents into the blue recycling bin. Place the empty bag in the recycling bin.



- Stack empty cardboard cartons on the floor near the blue recycling bin. The porters will flatten them for you.
- Recycle pizza boxes ONLY if they have NO grease stains or food residue. Otherwise place them in the trash.
- Dispose of all black plastic items in the trash.
- Empty recyclable items from plastic bags. Reuse the bag or discard the empty bag in the trash. Plastic bags are NEVER placed in the blue recycling bins.



Christian Ministries

Worship

• Sun @10:30am – **EPTV 125 & NH**

• Sun @10:30am • Jan 26, Worship with the Bennetts – **NH**

Bible Studies

• Mon @11:00am, Men's Growth Group w/Pr Tim – **SA**

• Mon @7:30pm, Pastor Wayne – **RB3**

Events

• Wed @11:00am • Prayer meeting with Pastor Tim – **SA**

• Wed, Jan 8 @6:30pm • Healing prayer – **SA**

• Sun, Jan 12 @3:00pm • Grandparents Day of Prayer with Pastor Glenn – **CH**

• Thu, Jan 16 @3:00pm • Healing Service • **SA**

Special Events

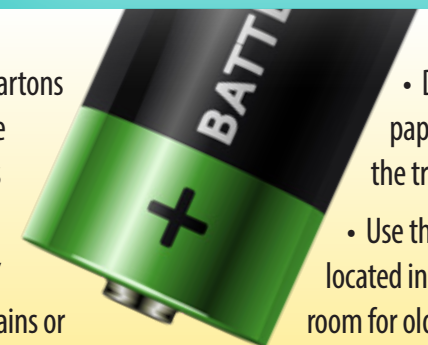
• Mon, Jan 20 @1:00pm • MLK Jr Celebration – **NH**

• Jan 1–2 @4:30pm • Hanukkah Prayer – **SA**

Chaplains (For Emergencies)

203.525.8752 or x4147

Please use this number for patients, family, residents, or anyone who is in need of talking to a Chaplain.



• Dispose of paper cups, paper towels, and Kleenex in the trash.

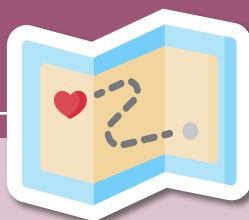
• Use the battery recycling kit located in the Village Green mail room for old batteries. Put leaking or corroded batteries in a bag before placing them in the trash.

Refer to the following resources for recycling information:

- Elim Park recycling magnet
- Wall posters in the trash rooms
- RecycleCT Wizard website at www.RecycleCT.com

When in doubt, throw it out!

January Trips



Away in a Manger: The Creation of Nativity Scenes, West Hartford, CT

Thur, January 9

Depart: 9:30am – Return: 12:00pm

This exhibit includes a variety of crèches that showcase different examples of stables and mangers. In addition, it also highlights the creation of a handful of crèches that have settings customized to display the figures. These crèches include, the Marcel Carbonel Santons of Marseille, France, Fontanini of Bagni di Lucca, Italy, the Neapolitan crèche by Cantone and Costabile of Naples Italy, and the newest additions to our collection by United States based Navidad Nativities: the St. Francis Nativity, with figures from Italy. **Cost: Donation**



Cafe Fiore, Branford, CT

Thur, January 16

Depart: 11:15am • Return: 3:00pm

Conveniently located on East Main Street in Branford, Connecticut, Cafe Fiore creates a sophisticated yet relaxed ambiance, just the right setting for enjoying our exquisite Italian dishes or your favorite wines and cocktails.



Noah Webster House Tour, West Hartford, CT

Thur, January 23

Depart: 12:00pm – Return: 3:30pm

Noah Webster was born on October 16, 1758 in West Hartford. He attend Yale, Connecticut's first college and, after graduation, Webster began working as a teacher.

His dictionary, A Compendious Dictionary of the English Language was published in 1806. It took him 22 more years to finish his American Dictionary of the English Language. When he finished in 1828, at the age of 70, Noah's dictionary defined over 65,000 words.

Noah Webster fought for an American language, copyright laws, a strong federal government, universal education, and the abolition of slavery. In addition, he wrote textbooks, edited magazines, corresponded with men like George Washington and Benjamin Franklin. **Tour: \$15**

January Lectures



Facing War: CT in WWI

CT Museum of Culture and History

Mon, January 6

1:00pm • Nelson Hall

What was life like on the home front during WWI? Learn about this dramatic time during which CT confronted women's demand for the vote, a deadly flu epidemic, and mass immigration—all while sending thousands of men and women to the front



Connecticut Birdman

Jeffrey Cianciolo

Tue, January 14

1:00pm • Nelson Hall

Jeffrey Cianciolo, aka, CT Birdman, has been studying and lecturing about birds all his life. Come and learn from one of the best "Bird Lecturers" in Connecticut.



Animal Tricksters

White Memorial Conservation Center

Tue, January 28

1:00pm • Nelson Hall

Sneaky, sneaky! Over time, certain animals have evolved unique adaptations to trick their foes. Through the use of camouflage, warning colors, and downright cunning behaviors, these animals have found ways to survive in a competitive world. We'll cover these various methods of trickery using native CT animals as examples. You'll even get to meet a couple live ambassadors!

Coming in February



LECTURES

February 3

Tapping into the Past: Tavern Life in Early Connecticut

Connecticut Museum of Culture and History



February 18

Connecticut's First Counterfeiter

Author: John Guerin



February 24

Wildlife in the Winter

White Memorial Conservation Center



TRIPS

February 6

Yale Art Gallery



February 13

Bellini's



February 20

Peabody Museum



February 24

Yale Chamber Concert



Questions about trips and lectures?
Call Sharon at x4143



ArtWorks Workshops



Mondays @11:00am

Creative Coloring – J.Bleau

Wednesdays @1:00pm

Open Paint Studio – D.Dupont

Fridays @1:30pm

Knitting & Crocheting Group

Tues, January 7 @2:00pm

Peaceful Painting – K.Trapp

Tues, January 14 @2:00pm

Peaceful Painting – K.Trapp

Tues, January 21 @2:00pm

Peaceful Painting – K.Trapp

Questions about art workshops?
Call Julia at x4163





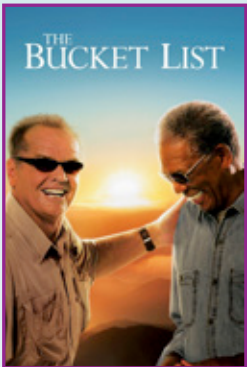
JANUARY MOVIES



SAT 1/4 • 2:00pm

Little Miss Sunshine

A family determined to get their young daughter into the finals of a beauty pageant take a cross-country trip in their VW bus. (2006) R • 1h 41m



TUE 1/7 • 6:30pm

The Bucket List

Two terminally ill men escape from a cancer ward and head off on a road trip with a wish list of to-dos before they die. (2007) PG-13 • 1h 37m



THU 1/16 • 12:30pm

Dark Victory

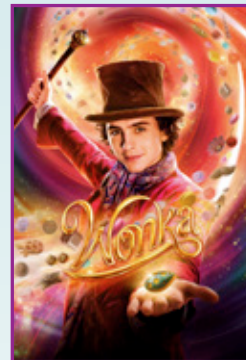
A young socialite is diagnosed with an inoperable brain tumor and must decide whether or not she'll meet her final days with dignity. (1939) NR • 1h 44m



SAT 1/18 • 2:00pm

The Help

An aspiring author during the civil rights movement of the 1960s decides to write a book detailing the African American maids' point of view on the white families for which they work, and the hardships they go through on a daily basis. (2011) PG-13 • 2h 26m



THU 1/23 • 12:30pm

Wonka

With dreams of opening a shop in a city renowned for its chocolate, a young and poor Willy Wonka discovers that the industry is run by a cartel of greedy chocolatiers. (2024) PG • 1h 56m



TUE 1/28 • 6:30pm

Unsung Hero

A mother's faith stands against all odds and inspires her husband and children to hold onto theirs. Based on a remarkable true story. (2024) PG • 1h 53m



Disclaimer: The views, actions, and opinions expressed in these films do not necessarily reflect the position, views, or mission of Elim Park.