

Happy  
Valentines Day!

February 2025

# everything ELIMS

**REAGAN**  
THURSDAY,  
FEBRUARY 6  
12:30pm

**TAVERN LIFE IN EARLY CT**  
CT Museum of Culture & History  
*February 3*

**YALE ART GALLERY**  
*February 6*

**SHOWBOAT** ▶  
Broadway Broadcast Series  
*February 5*



# everything ELIMS

February 2025

Your guide to Life Enrichment activities and trips, performing arts live in Nelson Hall, and broadcasts on our in-house channel, EPTV 125.

## ALSA Clinics



### Griffin Hospital Blood Draw

Tuesdays at 8:00am,  
Thursdays at 8:30am  
Mallard Mill Medical Suite  
To schedule, call the nurse at x4322

### Blood Pressure Clinic

Thursday at 11:00am–12:00pm  
ALSA Nursing Office

### Hearing Aid Clinic

Monday, Feb 10 • 1:00pm–4:00pm  
Mallard Mill 2nd floor library  
Call x4329 for appointment

### Ear Wax Clinic

Thursday, Feb 6 • 1:15pm–3:45pm  
Mallard Mill Medical Suite  
Call at x4329 for details and to sign up.

### Podiatrist

Thursday, Feb 13 from 9:00am–5:00pm  
Mallard Mill Medical Suite  
Call 203.745.4002 for appointments

## Arts & Leisure

**Julia Bleau**, Arts & Leisure Coordinator

Phone extension: x4163  
Email: jbleau@elimpark.org

### Contact Julia:

- To reserve spaces in the Arts & Leisure Center
- To suggest new activities or form a new group

## Bus To Shopping

Catch the Elim Park bus transportation to local grocery stores, banks, and more. A schedule of times and locations can be found at the Concierge Desk in the Oasis, or call the Transportation Coordinator at x4354.

Residents need to sign up by 3:00pm the day before the shopping trip.



**Neighborhood pick ups begin at 9:00am on Tuesdays and Fridays and at 9:30am on Wednesdays.**

## Life Enrichment

**Sharon Snow**, Life Enrichment Coordinator

Phone extension: x4143  
Email: ssnow@elimpark.org

### Contact Sharon:

- To make reservations for trips and life enrichment programs
- To reserve common areas and lounges for a group activity
- To suggest new activities or form a new group

## EPTV: In-house TV

**125**– Nelson Hall events and info, including live broadcasts.

**126**– Bulletins and other news.



## Nelson Hall

**Pam Nelson**,  
Director, Nelson Hall  
Phone extension: x4309

Email: pnelson@elimpark.org

Box office phone: x4495

Email: nelsonhall@elimpark.org

To reserve Nelson Hall for an event or meeting, email:  
Nelsonhallproductions@gmail.com

## Nelson Hall FAQs

### “What do I need to reserve in advance?”

Residents must purchase show tickets with assigned seating.

You do not need to reserve a seat for Sunday Services, movies or any other meetings or events at this time.

### “Where and when can I get tickets to shows?”

- Guests can purchase on-line at nelsonhall.org
- Residents and staff can visit the Box Office during open hours
- Call the Box Office at x4495 or 203.699.5495
- Email nelsonhall@elimpark.org

### Box Office Hours:

**Tue–Fri, 10:00am–2:00pm**

## FITNESS & WELLNESS CENTER SCHEDULE—February 2025

Monday	Tuesday	Wednesday	Thursday	Friday
<b>Land Exercise Schedule</b>				
9:00am–9:30am Blue Class	9:00am–9:30am Circuit	9:00am–9:30am Blue Class		9:00am–9:30am Blue Class
9:45am–10:15am Core Strength	9:45am–10:15am Mind/Body		9:45am–10:15am Mind/Body	
10:45am–11:15am Green Class		10:45am–11:15am Green Class		10:45am–11:15am Green Class
	11:15am–11:45am Balance		11:15am–11:45am Balance	
12:00pm–12:30pm Yellow Class		12:00pm–12:30pm Yellow Class		12:00pm–12:30pm Yellow Class

**BLUE:** Moderate to vigorous activity regularly, class all standing. **GREEN:** Active life most of the time, class mix of standing and seated. **YELLOW:** Mobility limitations, seated class with weights. **BALANCE:** Improving posture and balance for all fitness levels. **CIRCUIT:** Moderate to vigorous activity, class combines strength, balance and cardio exercises. **CORE STRENGTH:** Class designed to target and strengthen core/abdominal muscles. Participants will be on the floor for the majority of class. **MIND/BODY:** Seated class with stretching/relaxation.

## Aquatic Exercise and Pool Schedule • No Lifeguard on Duty—Swim at Your Own Risk

Please swipe your barcode to sign in and out, whether attending a class or open swim

5:00am–9:00am Open Swim	5:00am–11:00pm Open Swim	5:00am–9:00am Open Swim	5:00am–8:30am Open Swim	5:00am–9:00am Open Swim
			8:30am–9:00am Aqua Power	
9:15am–10:00am Aqua Blue		9:15am–10:00am Aqua Blue	9:15am–11:00pm Open Swim	9:15am–10:00am Aqua Blue
10:15am–11:00am Aqua Green		10:15am–11:00am Aqua Green		10:15am–11:00am Aqua Green
11:15am–Noon Aqua Yellow		11:15am–Noon Aqua Yellow		11:15am–Noon Aqua Yellow
Noon–11:00pm Open Swim		Noon–11:00pm Open Swim		Noon–11:00pm Open Swim

**AQUA BLUE:** For participants who perform moderate to vigorous activity regularly. **AQUA GREEN:** For participants who lead an active lifestyle most of the time. **AQUA YELLOW:** For participants who need a gentle class due to mobility limitations. **AQUA POWER:** For participants looking for a higher energy class for strength and cardio exercise.

**Fitness & Wellness Center Main Phone – 203.272.3547 x360 or in-house dial x4360**

## New This Year!

Join us for the inaugural Rooted in Faith concert, featuring the inspirational music of Ryan Stevenson. Experience an unforgettable performance while supporting Nelson Hall.

## Why Rooted in Faith?

This new concert series celebrates Elim Park's deep-rooted history and affiliation with the faith community. It's a vibrant tribute to our heritage, brought to life through the joy of music.

## Is it a Fundraising Event?

Yes! Rooted in Faith is an additional performance (offered outside of our regular season) designed to raise funds for Nelson Hall Performing Arts at Elim Park. Whether you choose a general admission ticket or upgrade to the exclusive VIP Meet and Greet package, all proceeds will support the capital improvements planned for Nelson Hall.

**Questions?**  
Call the Box Office  
203.697.8992

**FRI 05/16/25**  
2:00pm & 7:30pm

featuring  
**Ryan Stevenson,**  
Christian Recording Artist,  
GRAMMY® and  
Billboard Music Award  
nominee

# Rooted in Faith Concert



## Hot Off the Presses!



We're beyond excited to reveal our brand-new marketing brochure, and we couldn't be prouder of how it turned out! This vibrant piece showcases the heart and soul of our very unique Elim Park community—complete with familiar faces of your neighbors and friends.

A big thank-you to everyone who played a part in bringing this vision to life. Your contributions made all the difference!



**Ready for a sneak peek?**  
Stay tuned—we think you're  
going to love it!



## Spring Season 2025



**Tickets On Sale Now!**

# 8 Steps to a Healthy Heart February 10–14



Join this fun and simple challenge!



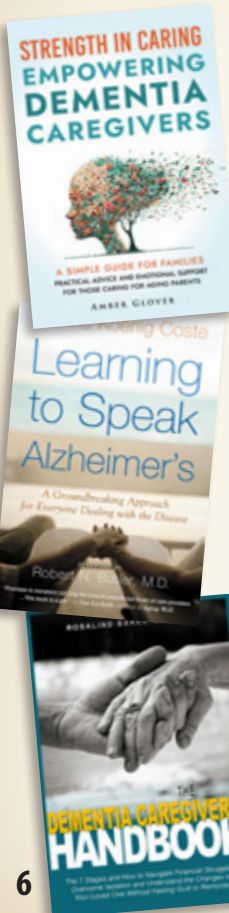
Take a walk indoors around Elim Park and locate all 8 of the Heart Health Tips between Feb 10 and Feb 14

*\*Extra Challenge\**

Use the QR codes at each location to find the secret word. Collect all 8 words to form the secret sentence and bring to the Fitness Center for a prize!

## Dementia Caregiver Resource Library

Education is crucial in enhancing the quality of care for individuals with dementia. By equipping caregivers with the right knowledge and resources, they are better prepared to understand and address the unique challenges posed by memory loss. A well-informed community can lead to more compassionate and effective support for residents and their families. For those reasons, a resource library has been created and is available to residents, family members, and staff of Elim Park. The list of books includes "Learning to Speak Alzheimer's," "The 36 Hour Day," "The Dementia Caregiver's Handbook," and "Strength in Caring: Empowering Dementia Caregivers." For more information or to see the full list of books, please visit the PALM program located in the Andrew's Knoll lounge.



## Welcome Mark Giannetta, New Culinary Services Director!

We are pleased to introduce Mark Giannetta as the new Culinary Services Director at Elim Park. With over 35 years of management experience in the hospitality and food service industry, Mark brings a wealth of knowledge and expertise to our team. His leadership journey has taken him through a variety of environments, including corporate settings, hotels, restaurants, universities, and private country clubs.

Outside of his professional achievements, Mark is a proud father of three daughters and a grandfather to three grandchildren. In his free time, he enjoys playing golf and embracing his love for sports as a self-proclaimed "sports fanatic." But above all, his true passion is cooking—a craft he finds both relaxing and fulfilling.



# Valentine's Day Party

Friday, February 14  
Party starts @9:30am



**9:30am**  
**Flowers with Sharon**

Pick up your pre-ordered carnations  
Oasis

**10:00am**  
**Mocktail Demo with HHS**

Learn how to make your own mocktails  
Club House



**12:00pm**  
**Art with K.Trapp**

Surprise extra art class with Kellyn  
ArtWorks

**4:30pm**  
**Dinner Music**


Enjoy live music with Don Pierson  
Oasis



Sign up for all events at the Oasis

	Sat • February 1	Birthday/Anniv
10:00am	Corn Hole • WC	 <b>Birthdays</b> February 1 Larry Trudell
11:30am	First Saturday Rosary • SA	 <b>SENIOR PROM</b> <i>A Lifetime of Memories, One Magical Night!</i> <b>Wed, March 12</b> <b>5:00pm–7:00pm</b> <b>in The Oasis</b> <i>Following regular dinner service, enjoy music, dancing, desserts, punch and so much more!</i> Residents need to pick up a ticket from Julia Bleau
2:00pm	Movie—White Bird (2:01) • NH	 <b>Formal attire encouraged!</b>

MM—Mallard Mill NH—Nelson Hall SA—Sanctuary WC—Wellness Ctr

	Sun • February 2	Mon • February 3	Tue • February 4	Wed • February 5	Thu • February 6	Fri • February 7	Sat • February 8		Birthday/Anniv
9:00am		Devotions • EPTV	Devotions • EPTV Bus to Shop—Big Y	Devotions • EPTV	Devotions • EPTV	Devotions • EPTV Bus to Shop—Stop & Shop		9:00am	 <p><b>Birthdays</b></p> <p><b>February 5</b> Vivian Newill Mitch Mitchell</p> <p><b>February 6</b> Roy Pritchard Irene Schaefer Dorothy Hammer Barbara Langner</p>
9:15am		Today at Elim • EPTV	Today at Elim • EPTV	Today at Elim • EPTV	Today at Elim • EPTV	Today at Elim • EPTV		9:15am	
9:30am				Bus to Shop—Banks & Pharmacies				9:30am	
10:00am		St. Bridget's RC Mass • NH	Brain Fitness • AW				Corn Hole • WC	10:00am	
10:30am	Worship • EPTV & NH							10:30am	
11:00am		Creative Coloring Group • AW Men's Group w/Pastor Tim • SA	Handbell Choir • RB3 EPU: <i>World of Watercolor</i> • EPTV	Prayer Meeting w/Pastor Tim • SA				11:00am	
11:30am				Cinema Group Meeting • NH				11:30am	
11:35am	RC Comm—11:35am • RCH /11:45am • HCC/11:55am • BV1							11:35pm	
11:45am					Depart for Yale Art Gallery			11:45am	
12:00pm			Elim Park Players Meeting • NH					12:00pm	
12:30pm	Great Courses • NH				Movie—Reagan (2:21) • NH			12:30pm	
1:00pm	Mexican Dominoes • BV1	Lecture: <i>Tavern Life in Early CT</i> • NH Mahjong • MV2	Wii Bowling • CH Open Bridge • SM1	Open Paint Studio • AW Curtains UP! Theatre • EPTV Open Bridge • SM1		Wii Golf • AK1		1:00pm	
1:30pm		Whist • AK3	Whist • AK3	Tech Help • VG		Knitting/Crocheting Group • AW		1:30pm	
2:00pm			Peaceful Painting—K. Trapp • AW	Family Support Group • MV3E 10M Knowledge • EPTV		First Friday Mass • HCC	EPU: <i>Bereavement Journaling</i> • MM2	2:00pm	
3:00pm			Golf with Jenn • CH	Great Courses • NH		Rosary • SA		3:00pm	
4:30pm					4:30pm—6:30pm Gazebo Musician—Denise Jones			4:30pm	
6:30pm				Broadway Broadcast — <i>Showboat</i> (2:24) • NH Healing Prayer • SA				6:30pm	
7:15pm		Bingo • Bistro						7:15pm	
7:30pm		Bible Study, Pastor Wayne • RB3						7:30pm	



**Birthdays**

**February 5**  
Vivian Newill  
Mitch Mitchell

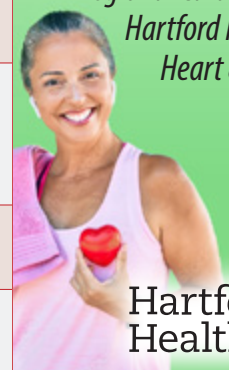
**February 6**  
Roy Pritchard  
Irene Schaefer  
Dorothy Hammer  
Barbara Langner

The Cheshire Healthy Coalition presents

**Strong Hearts, Strong Women: Empowering Your Cardiovascular Health**

Thu, February 20 @10:00am in The Club House

presented by  
Christie Scirocco, RN  
Regional Cardiology Mgr,  
Hartford Healthcare  
Heart & Vascular  
Institute



Hartford HealthCare

	Sun • February 9	Mon • February 10	Tue • February 11	Wed • February 12	Thu • February 13	Fri • February 14	Sat • February 15		Birthday/Anniv
9:00am		Devotions • EPTV	Devotions • EPTV Bus to Shop—Big Y	Devotions • EPTV	Devotions • EPTV	Devotions • EPTV Bus to Shop—Stop & Shop/Library		9:00am	 <p><b>Birthdays</b></p> <p><b>February 10</b> Ann Petti</p> <p><b>February 12</b> Joey Ekberg</p> <p><b>February 15</b> Lucille Velleca</p>
9:15am		Today at Elim • EPTV	Today at Elim • EPTV	Today at Elim • EPTV	Today at Elim • EPTV	Today at Elim • EPTV		9:15am	
9:30am				Bus to Shop—Wallingford Walmart				9:30am	
10:00am			Brain Fitness • AW			Mocktail Demo • CH	Corn Hole • WC	10:00am	
10:30am	Worship • EPTV & NH							10:30am	
11:00am		Creative Coloring Group • AW Men's Group w/Pastor Tim • SA	Handbell Choir • RB3 EPU: <i>World of Watercolor</i> • EPTV	Prayer Meeting, w/Pastor Tim • SA				11:00am	
11:15am					Depart for Bellini's			11:15am	
11:35am	RC Comm—11:35am • RCH /11:45am • HCC/11:55am • BV1							11:35am	
12:00pm			Elim Park Players Meeting • NH			Peaceful Painting—K. Trapp • AW		12:00pm	
12:30pm	Great Courses • NH							12:30pm	
1:00pm	Mexican Dominoes • BV1	Valentine's Day Bingo • OA Mahjong • MV2	Wii Bowling • CH Open Bridge • SM1	Open Paint Studio • AW Curtains UP! Theatre • EPTV Open Bridge • SM1		Crisis on Valentine's Day • NH Wii Golf • AK1		1:00pm	
1:30pm		Whist • AK3	Whist • AK3	Tech Help • VG		Knitting/Crocheting Group • AW		1:30pm	
2:00pm			Peaceful Painting—K. Trapp • AW	10M Knowledge • EPTV			EPU: <i>Bereavement Journaling</i> • MM2	2:00pm	
3:00pm	Grandparents Day of Prayer • CH		Golf with Jenn • CH	Great Courses • NH	Res/Pres Meeting • EPTV & NH	Rosary • SA		3:00pm	
4:30pm						4:30pm—6:30pm Gazebo Musician—Don Pierson		4:30pm	
6:30pm			Movie— <i>Harriet</i> (2:05) • NH	Virtual PALM Information Session				6:30pm	
7:15pm		Bingo • Bistro						7:15pm	
7:30pm		Bible Study, Pastor Wayne • RB3						7:30pm	




**Virtual Info Session**

**February 12 @6:30pm**

Residents and family members are invited to learn all about The PALM Program for those with memory loss. To RSVP, contact Laura at [Imartin@elimpark.org](mailto:Imartin@elimpark.org) or Mary at [munderwood@elimpark.org](mailto:munderwood@elimpark.org)

The Elim Park Players present **Crisis on the Valentine's Day Helpline**

Friday, February 14 at 1:00pm

	Sun • February 16	Mon • February 17	Tue • February 18	Wed • February 19	Thu • February 20	Fri • February 21	Sat • February 22		Birthday/Anniv
9:00am		Devotions • EPTV	Devotions • EPTV Bus to Shop—Big Y	Devotions • EPTV	Depart for Peabody Museum Devotions • EPTV	Devotions • EPTV Bus to Shop—Stop & Shop		9:00am	 <p><b>Birthdays</b></p> <p><b>February 16</b> Sally Sporbert</p> <p><b>February 20</b> Dwight Campbell Richard Ardolino</p> <p><b>February 21</b> Betty Pritchard</p> <p><b>February 22</b> Marian Scimone Pat Palana</p>
9:15am		Today at Elim • EPTV	Today at Elim • EPTV	Today at Elim • EPTV	Today at Elim • EPTV	Today at Elim • EPTV		9:15am	
9:30am				Bus to Shop—Townline Sq. Meriden				9:30am	
10:00am					Cardiovascular Presentation • CH Trinity Episcopal Service • SA		Corn Hole • WC	10:00am	
10:30am	Worship • EPTV & NH							10:30am	
11:00am		Creative Coloring Group • AW Men's Group w/Pastor Tim • SA	Handbell Choir • RB3 EPU: <i>World of Watercolor</i> • EPTV	EPU: <i>Apocalypse Now</i> • RB3 Prayer Meeting, w/Pastor Tim • SA				11:00am	
11:30am			Men's Luncheon • Adelphi Cafe					11:30am	
12:00pm			Elim Park Players Meeting • NH					12:00pm	
12:30pm	Great Courses • NH (Great Courses Meeting @12:15pm)							12:30pm	
1:00pm	Mexican Dominoes • BV1	Mahjong • MV2	Lecture: <i>American Counterfeiter</i> • NH Wii Bowling • CH Open Bridge • SM1	Open Paint Studio • AW Curtains UP! Theatre • EPTV Open Bridge • SM1		Wii Golf • AK1		1:00pm	
1:30pm		Whist • AK3	Whist • AK3	Tech Help • VG		Knitting/Crocheting Group • AW		1:30pm	
2:00pm			Peaceful Painting—K. Trapp • AW	Family Support Group • MV3E 10M Knowledge • EPTV			EPU: <i>Bereavement Journaling</i> • MM2 Movie— <i>Witness</i> (1:52) • NH	2:00pm	
3:00pm	Roman Catholic Mass • NH		Golf with Jenn • CH	Great Courses • NH (Great Courses Meeting @2:45pm)	Healing Service • SA	Rosary • SA		3:00pm	
4:30pm					4:30pm—6:30pm Gazebo Musician—George Orminsky			4:30pm	
5:00pm	Movie— <i>The Wild Robot</i> (1:42) • NH							5:00pm	
6:30pm			EPU: <i>Working with Spies</i> • SM1 Movie— <i>Ballet: Romeo &amp; Juliet</i> (2:21) • NH					6:30pm	
7:15pm		Bingo • Bistro						7:15pm	
7:30pm		Bible Study, Pastor Wayne • RB3						7:30pm	

**Onsite Dental Care** will be offering Elim Park residents access to convenient, comprehensive oral care.

**Tuesday, February 18**

- ✓ Full preventative
- ✓ Full restorative
- ✓ Full denture services

To schedule an appointment please contact Onsite Dental Care

**800.632.0306**



	Sun • February 23	Mon • February 24	Tue • February 25	Wed • February 26	Thu • February 27	Fri • February 28	
9:00am		Devotions • <b>EPTV</b>	Devotions • <b>EPTV</b> Bus to Shop—Big Y	Devotions • <b>EPTV</b>	Devotions • <b>EPTV</b>	Devotions • <b>EPTV</b> Bus to Shop—Stop & Shop/Library	9:00am
9:15am		Today at Elim • <b>EPTV</b>	Today at Elim • <b>EPTV</b>	Today at Elim • <b>EPTV</b>	Today at Elim • <b>EPTV</b>	Today at Elim • <b>EPTV</b>	9:15am
9:30am				Bus to Shop—North Haven Crossing			9:30am
10:00am		<b>EPU: Creating Small Figures</b> • <b>AW</b>	Brain Fitness • <b>AW</b>				10:00am
10:30am	Worship with the Bennetts • <b>EPTV &amp; NH</b>						10:30am
11:00am		Creative Coloring Group • <b>AW</b> Men's Group w/Pastor Tim • <b>SA</b>	Handbell Choir • <b>RB3</b> <b>EPU: World of Watercolor</b> • <b>EPTV</b>	<b>EPU: Apocalypse Now</b> • <b>RB3</b> Prayer Meeting, w/Pastor Tim • <b>SA</b>			11:00am
11:30am				Depart for Yale Chamber Music Concert			11:30am
11:35am	RC Comm—11:35am • <b>RCH</b> /11:45am • <b>HCC</b> /11:55am • <b>BV1</b>						11:35am
12:00pm			Elim Park Players Meeting • <b>NH</b>				12:00pm
12:30pm	Great Courses • <b>NH</b>				Movie— <i>Mother of the Bride</i> (1:28) • <b>NH</b>		12:30pm
1:00pm	Mexican Dominoes • <b>BV1</b>	Lecture: <i>Winter Wildlife</i> • <b>NH</b> Mahjong • <b>MV2</b>	Wii Bowling • <b>CH</b> Open Bridge • <b>SM1</b>	<b>EPU: Drawing Faces</b> • <b>AW</b> Curtains UP! Theatre • <b>EPTV</b> Open Bridge • <b>SM1</b>		Wii Golf • <b>AK1</b>	1:00pm
1:30pm		Whist • <b>AK3</b>	<b>EPU: Beginning Knitting</b> • <b>SM3</b> Whist • <b>AK3</b>	Tech Help • <b>VG</b>		Knitting/Crocheting Group • <b>AW</b>	1:30pm
2:00pm		<b>EPU: Throwing Pots on Pottery Wheel</b> • <b>AW</b>		10M Knowledge • <b>EPTV</b>			2:00pm
3:00pm			Golf with Jenn • <b>CH</b>	Great Courses • <b>NH</b>		Rosary • <b>SA</b>	3:00pm
6:30pm			<b>EPU: Working with Spies</b> • <b>SM1</b> Movie— <i>Musical: The Color Purple</i> (2:21) • <b>NH</b>				6:30pm
7:15pm		Bingo • <b>Bistro</b>					7:15pm
7:30pm		Bible Study, Pastor Wayne • <b>RB3</b>					7:30pm



**Birthdays**

**February 25**  
Gloria Nuechterlein

**February 26**  
Harrison Dodd

**February 27**  
Dorothy Anthony



**The newest member of our Elim Park family!**

Ellen Ferrara  
Apt. 4107

*Broadway Broadcast Series*

**Show Boat**

**Wed, February 5**  
**6:30pm**

An iconic piece of American theater with music by Jerome Kern and lyrics by Oscar Hammerstein II and P.G. Wodehouse, *Show Boat* stands as an archetypical representation of a time and place in America that the audiences of today must put into proper perspective.

It was groundbreaking when it premiered in 1927 because it straddled the cusp between music hall and a new American musical theater. It was not a traditional operetta, but rather a dramatic musical event that explored race, class, and privilege. Bold for its time, it was the first musical stage production with an interracial (yet segregated) cast with Black performers in leading roles.





# ELIM PARK UNIVERSITY

## Winter Semester in Session Live to Learn!

### Arts



#### **The Secrets of Drawing Faces**

Instructor: Dorothy Dupont

ArtWorks, Painting Studio

Wednesdays 1:00pm–3:00pm

2/26



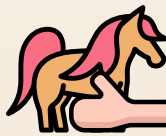
#### **Pottery: Throwing Pots on the Wheel**

Instructor: Claudine Smith

ArtWorks, Pottery Studio

Mondays 2:00pm–3:30pm

2/24



#### **Pottery: Creating Small Animals or Small Figures**

Instructor: Claudine Smith

ArtWorks, Pottery Studio

Mondays 10:00am–11:30am

2/24

### Faith



#### **Apocalypse Now: What World Religions Say About the Culmination of History**

Instructor: Dr. Wayne Detzler

Riverbend 3rd Flr Lounge

Wednesdays 11:00am–12:00pm

2/19, 2/26

### Special Interests



#### **Beginning Knitting**

Instructor: Fran Hofmeister

Spring Meadow 3rd Flr Lounge

Tuesdays 1:30pm–2:30pm

2/25



#### **Bereavement Journaling**

Instructor: Barbara Welker Griggs

Mallard Mill, 2nd Flr

Saturdays 2:00pm–3:00pm

2/8, 2/12, 2/22



#### **Working with Spies**

Instructor: Pam Sleeper

Spring Meadow 1st Flr Lounge

Tuesday 6:30pm–7:30pm

2/18, 2/25



### We'd love to hear from you!

*This is a wonderful opportunity to connect with fellow residents, spark engaging conversations, and make our community's learning experience even richer.*

*Drop us a line with your ideas, and let's make it happen!*

Please contact: Julia Bleau:  
JBleau@elimpark.org  
x4183



# THE GREAT COURSES

## Music as a Mirror of History

Discover the fascinating ways in which great works of music have interacted with historical events, in this eye-opening course taught by a celebrated composer and music historian.

2/2 @12:30pm & 2/5 @3:00pm

Shostakovich: Symphony No. 13 (1962)

2/9 @12:30pm & 2/12 @3:00pm

Copeland: Symphony No. 3 (1946)

2/16 @12:30pm & 2/19 @3:00pm

Gorecki: Symphony No. 3 (1976)

2/23 @12:30pm & 2/26 @3:00pm

Crumb: Black Angels (1970)



## Recycle Tip of the Month

### What Is Single-Stream Recycling?

Single-Stream Recycling (SSR) is a system in which acceptable materials (plastics, metal, glass, cardboard, & paper) are collected in one container. Sorting and processing take place at the Materials Recovery Facility (MRF). At Elim Park, the blue bins in the trash rooms are designed for SSR.

The biggest challenge of SSR is avoiding contamination. Food, liquids, and items contaminated by human waste

are the biggest culprits. Contaminated items have the potential to contaminate other items. All items in the blue bins must be clean, dry, and free of contamination.

“Wish-cycling” occurs when people put materials in the blue bins that they think are acceptable. Not every item marked with a triangle and a number is recyclable. Some recyclable items require special processing and do not belong in the blue bins.



For example, batteries never go into the blue bins. (Use the battery recycle kit in the Village Green Mailroom.) Film plastics, such as the outer wrappings of bundle packs of toilet paper or paper towels, do not belong in the blue bins. (Return film plastics to the grocery store.) If you are unable to recycle these items properly, then dispose of them in the trash.

### Refer to the following resources for recycling information:

- Elim Park recycling magnet
- Wall posters in the trash rooms
- RecycleCT Wizard website at [www.RecycleCT.com](http://www.RecycleCT.com)

**When in doubt, throw it out!**



## Christian Ministries

### Worship

• Sun @10:30am – EPTV 125 & NH

• Sun @10:30am • Feb 23, Worship with the Bennetts – NH

### Bible Studies

• Mon @11:00am, Men's Growth Group w/Pr Tim – SA

• Mon @7:30pm, Pastor Wayne – RB3

### Events

• Wed @11:00am • Prayer meeting with Pastor Tim – SA

• Wed, Feb 5 @6:30pm • Healing prayer – SA

• Sun, Feb 9 @3:00pm • Grandparents Day of Prayer with Pastor Glenn – CH

• Tue, Feb 18 @11:30am • Men's Luncheon – Adelphi Cafe

• Thu, Feb 20 @3:00pm • Healing Service • SA

### Special Events

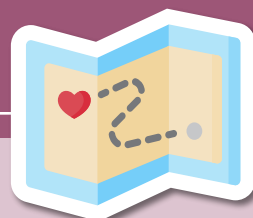
• Sat, May 17 @11:00am • Baptism & Renewal Svc • WC

### Chaplains (For Emergencies)

203.525.8752 or x4147

Please use this number for patients, family, residents, or anyone who is in need of talking to a Chaplain.

## February Trips



### **Yale Art Gallery, New Haven, CT**

**Thur, February 6**

Depart: 11:45am – Return: 3:00pm

Yale Art Gallery spans one and a half city blocks.

The museum features over 4,000 works on display spread out in three buildings as well as a rooftop terrace and sculpture garden. Galleries showcase artworks from ancient times to the present, including vessels from Tang-dynasty China, early Italian paintings, textiles from Borneo, treasures of American art, ancient sculptures, masterpieces by Degas, van Gogh, and Picasso, and more.



### **Bellini's Ristorante, North Haven, CT**

**Thur, February 13**

Depart: 11:15am – Return: 2:00pm

Join us for a delicious Italian meal that is priced affordable. Bellini's is a popular Italian Ristorante in North Haven which is family owned and operated.



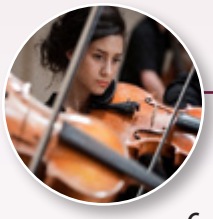
### **Peabody Museum, New Haven, CT**

**Thur, February 20**

Depart: 9:00am – Return: 12:30pm

The Peabody Museum has been part of Yale and New Haven for more than 150 years. In the 19th century it was the science start-up of its day.

A recent major renovation has reinvented the Peabody for the 21st century and beyond, further establishing the museum as a home for cutting edge research, extraordinary education, and breath-taking exhibitions.



### **Yale Chamber Music Concert, New Haven, CT**

**Wed, February 26**

Depart: 11:30am – Return: 2:15pm

Come enjoy a free classical chamber concert from Yale University's School of Music seniors.

## February Lectures



**Tapping into the Past:  
Tavern Life in Early Connecticut**  
CT Museum of Culture and History

**Mon, February 3**

1:00pm • Nelson Hall

Taverns in early Connecticut were more than just a place to drink. Travelers and locals alike saw taverns as a place to be entertained, spread news and gossip, have a good meal, and get a night's lodging. Learn about how taverns were an essential part of every Connecticut town.



**American Patriot and Counterfeiter**  
Author John Guevin

**Tue, February 18**

1:00pm • Nelson Hall

John Guevin will lecture about his book, "American Patriot and Counterfeiter," based on a Prospect man named Peter Gilkey in 1762. Follow Peter Gilkey's journey from his boyhood in Northern Ireland to America. He settled into family life as a husband and father while working as a cobbler. But then came the counterfeiting of Spanish dollars, which changed his life forever. Watch as the husband, wife, and their small children, housed together in prison, struggle to survive. A real-life treasure hunt for valuable coins causes a frenzy. It's all here in this amazing but true story.



**Wildlife in Winter**  
White Memorial Conservation Center

**Mon, February 24**

1:00pm • Nelson Hall

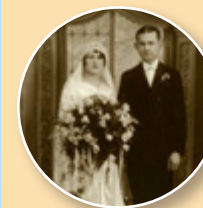
Humans may wear layers and drink more hot chocolate in winter, but what strategies do wild animals use to get through the cold months? Join White Memorial Conservation Center as we feature live animals, touchable props, and interactive games to discuss how some animals in CT remain active in winter, while others hibernate, migrate, or go into torpor.

## Coming in March



### LECTURES

**March 3**



**Something Old, Some New:  
History of CT Weddings**

CT Museum of Culture and History

**March 11**

**Backyard Birds**

CT Birdman



**March 31**



**Raptors**

White Memorial Conservation Center

### TRIPS

**March 5**

**Yale Chamber Music**



**March 13**

**Luce Ristorante**



**March 27**

**Institute of Native American Studies**



## ArtWorks Workshops



**Mondays @11:00am**

**Creative Coloring – J.Bleau**

**Wednesdays @1:00pm**

**Open Paint Studio – D.Dupont**

**Fridays @1:30pm**

**Knitting & Crocheting Group**

**Tues, February 4 @2:00pm**

**Peaceful Painting – K.Trapp**

**Tues, February 11 @2:00pm**

**Peaceful Painting – K.Trapp**

**Tues, February 18 @2:00pm**

**Peaceful Painting – K.Trapp**



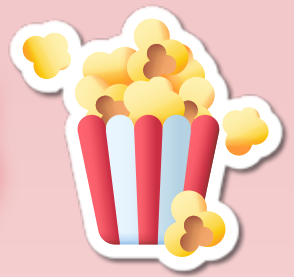
**Questions about trips and lectures?  
Call Sharon at x4143**

**Questions about art workshops?  
Call Julia at x4163**





# FEBRUARY MOVIES



**SAT 2/1 • 2:00pm**

## White Bird

Struggling to fit in at his new school after being expelled for his treatment of Auggie Pullman, Julian is visited by his grandmother and is transformed by the story of her attempts to escape Nazi-occupied France during World War II. (2023) PG-13 • 2h 1m



**TUE 2/18 • 6:30pm**

## Romeo & Juliet

This classic choreography by Kenneth MacMillan is set to the immortal notes of Prokofiev. In this ballet MacMillan deals with the matter paying great attention to human relations, lyricism, and psychological tension, without neglecting moments of humor, through the dynamics and the emotions of ballet d'action. (2016) NR • 2h 21m • **(Film Ballet)**



**THU 2/6 • 12:30pm**

## Reagan

A drama based on the life of Ronald Reagan, from his childhood to his time in the oval office. (2024) PG-13 • 2h 21m



**SAT 2/22 • 2:00pm**

## Witness

While protecting an Amish boy—who is the sole witness to a brutal murder—and his mother, a detective is forced to seek refuge within their community when his own life is threatened. (1985) R • 1h 52m



**THU 2/11 • 6:30pm**

## Harriet

The extraordinary tale of Harriet Tubman's escape from slavery and transformation into one of America's greatest heroes, whose courage, ingenuity, and tenacity freed hundreds of slaves and changed the course of history. (2019) PG 13 • 2h 5m



**TUE 2/25 • 6:30pm**

## The Color Purple

A woman faces many hardships in her life but finds extraordinary strength and hope in the unbreakable bonds of sisterhood. (2023) PG-13 • 2h 21m • **(Film Musical)**



**SUN 2/16 • 5:00**

## The Wild Robot

After a shipwreck, an intelligent robot called Roz is stranded on an uninhabited island. To survive the harsh environment, Roz bonds with the island's animals and cares for an orphaned baby goose. (2024) PG • 1h 42m • **(Family Movie Night)**



**THU 2/27 • 12:30pm**

## Mother of the Bride

Lana's daughter Emma returns from London and announces that she's getting married next month. Things become more complicated when Lana learns that the man who stole Emma's heart is the son of the man who broke hers years ago. (2024) TV-PG • 1h 28m



**Cinema Group Meeting**  
**Wed, Feb 5 @ 11:30am in Nelson Hall**  
**Come and offer your ideas and opinions for our upcoming movie schedules!**